

Appendix C

Attachment A: Secure Bicycle Parking

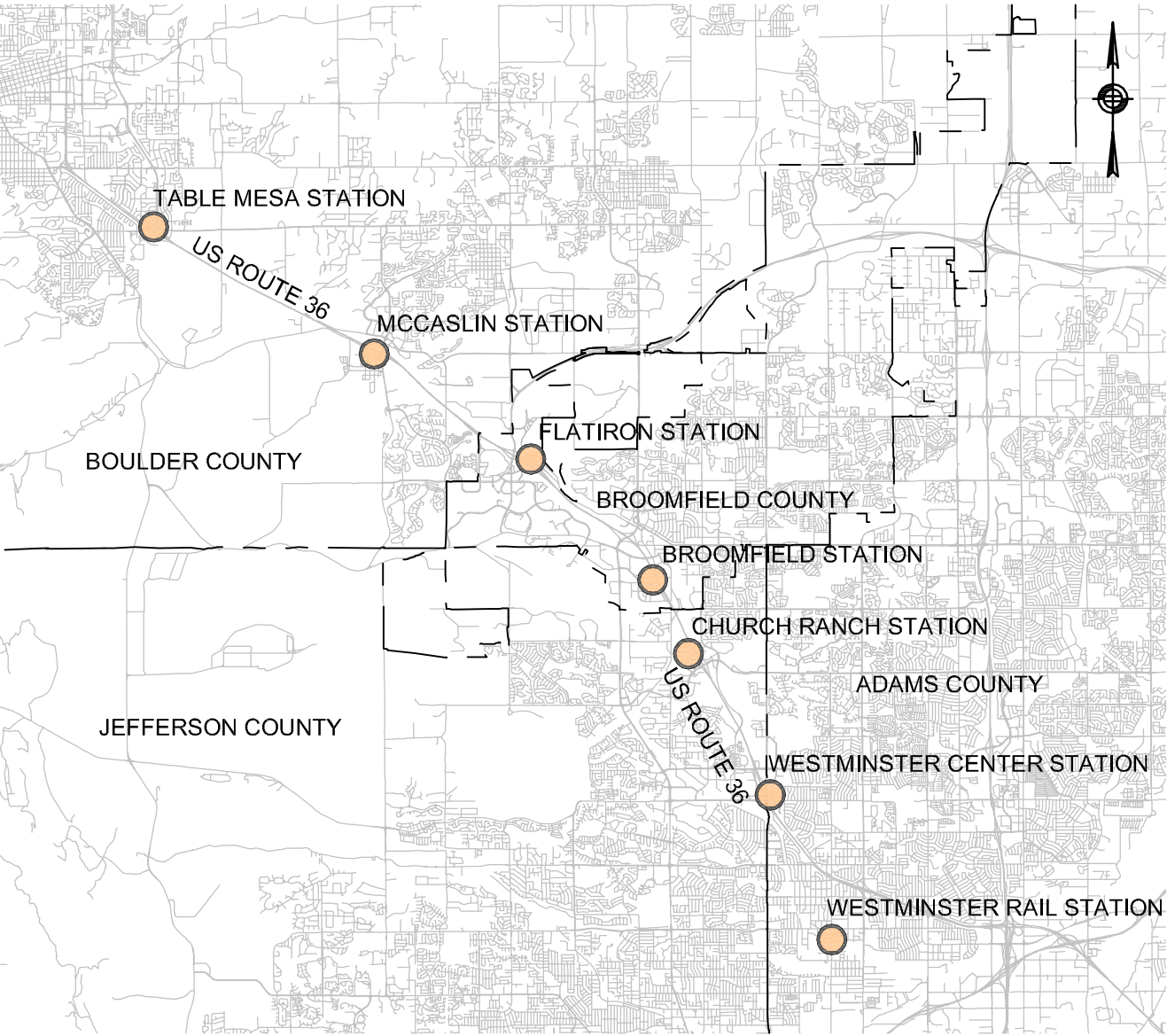
DENVER REGIONAL COUNCIL OF GOVERNMENTS

NORTHWEST CORRIDOR BICYCLE AND PEDESTRIAN ACCESSIBILITY STUDY

SECURE BICYCLE PARKING

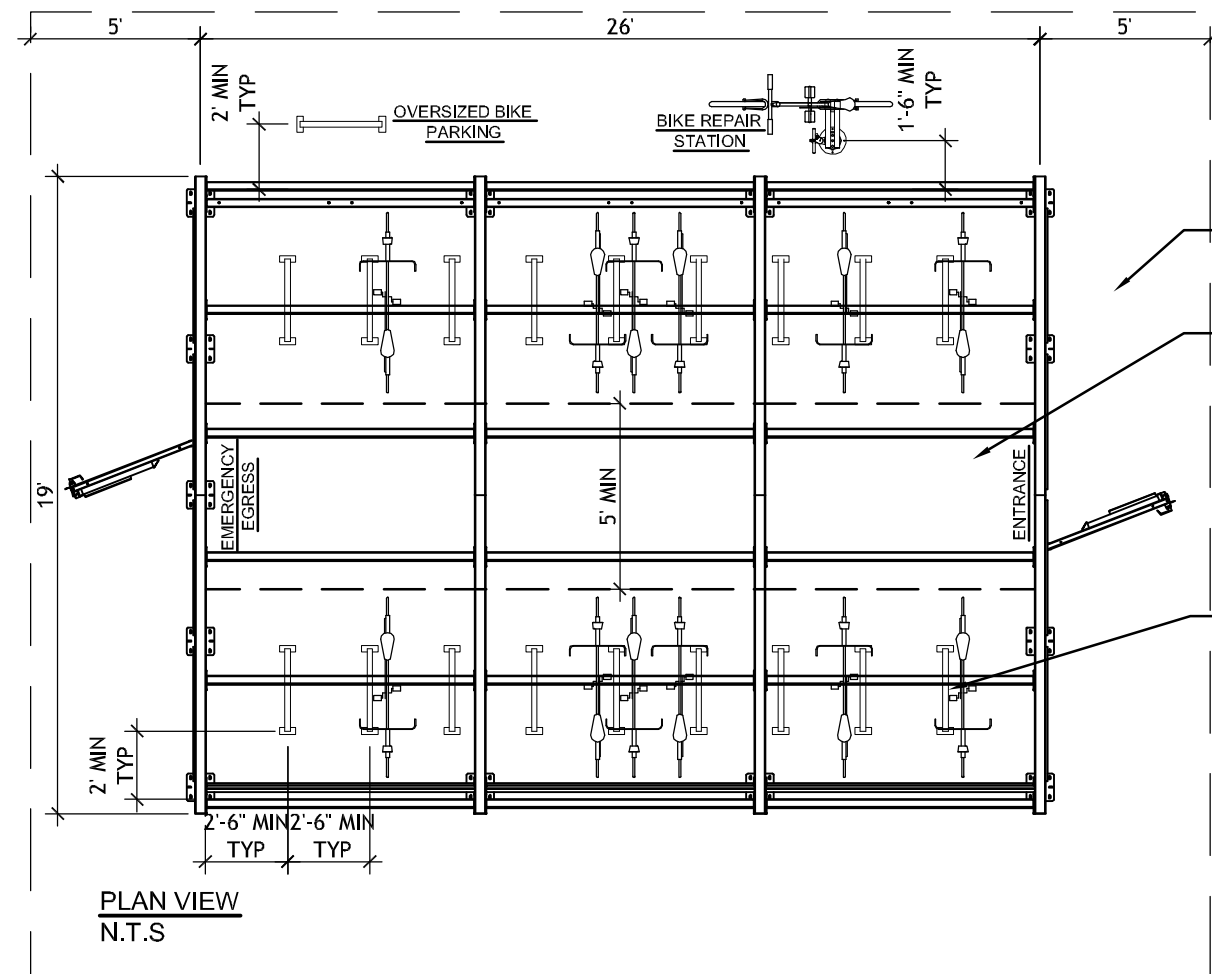
INDEX

DWG NO.	SHEET NO.	PLAN TITLE
G-001	1	TITLE SHEET AND INDEX
G-002	2	TYPICAL BIKE SHELTER DETAIL- LOW CAPACITY
G-003	3	TYPICAL BIKE SHELTER DETAIL- STANDARD CAPACITY
G-004	4	TYPICAL BIKE SHELTER DETAIL- HIGH CAPACITY
C-001	5	TABLE MESA STATION- EB
C-002	6	MCCASLIN STATION- EB
C-003	7	FLATIRON STATION- EB
C-004	8	FLATIRON STATION- WB
C-005	9	BROOMFIELD STATION- EB
C-006	10	BROOMFIELD STATION- WB
C-007	11	CHURCH RANCH STATION- EB
C-008	12	CHURCH RANCH STATION- WB
C-009	13	WESTMINSTER CENTER STATION- EB
C-010	14	WESTMINSTER CENTER STATION- WB
C-011	15	WESTMINSTER RAIL STATION



LOCATION MAP
N.T.S

CONCEPTUAL DESIGN/NOT FOR CONSTRUCTION



SECURE BIKE SHELTER- LOW CAPACITY:

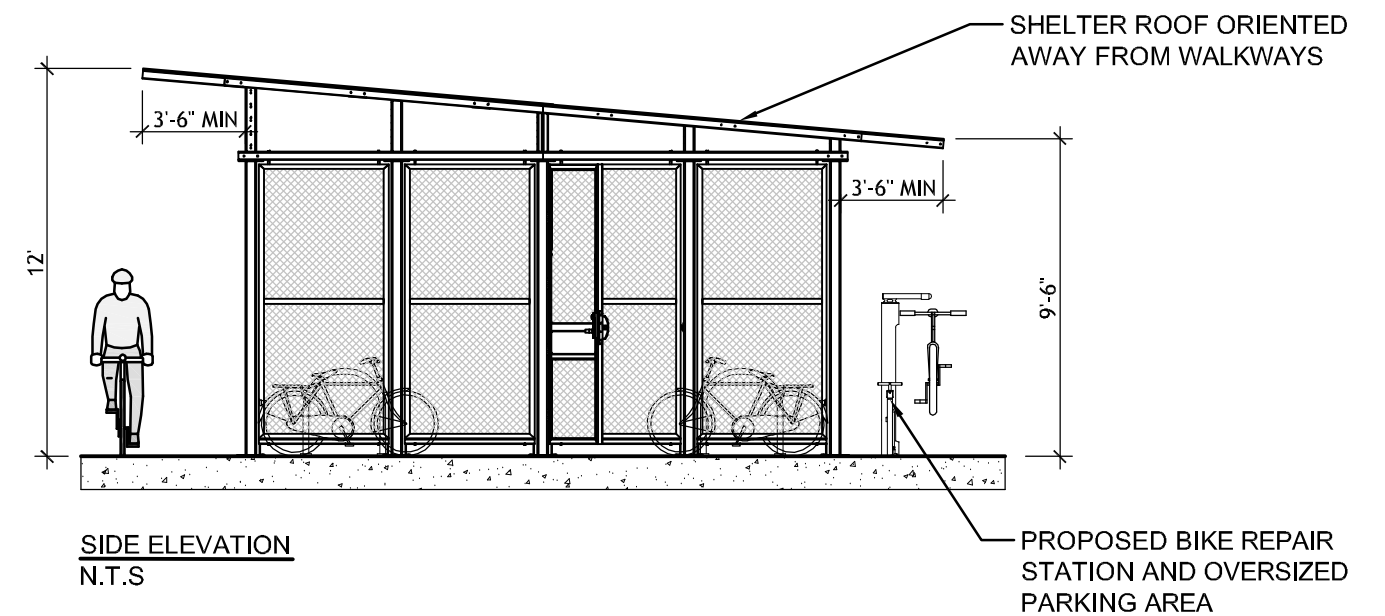
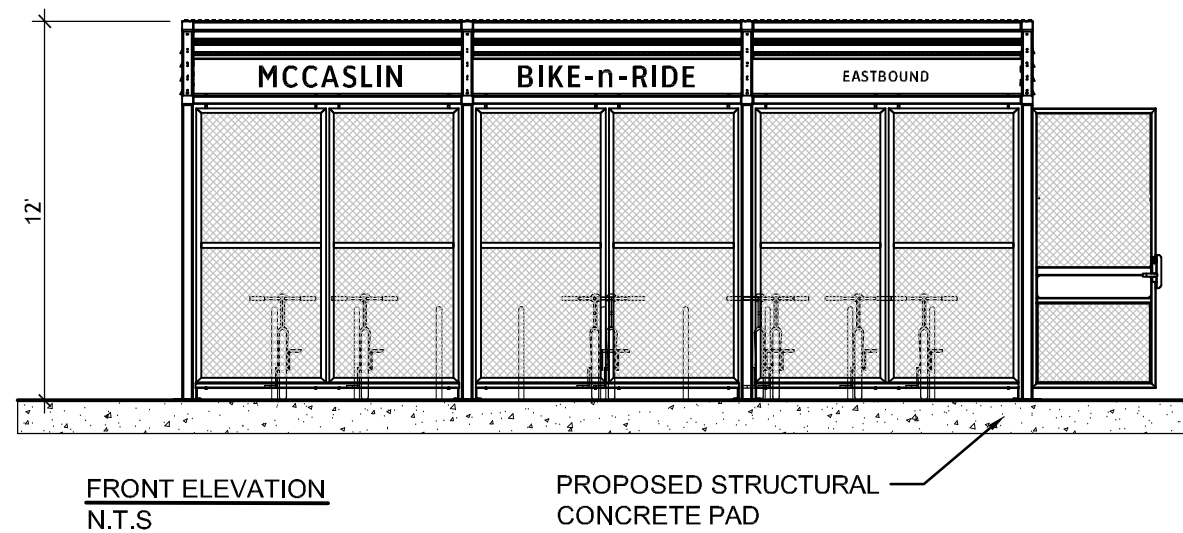
- Bike Shelter
- Inverted-U style racks
- Oversized bike parking area
- Bike repair station

Inverted-U style racks: 18 units
Bicycle Capacity: 2 spaces per rack unit, 36 total spaces

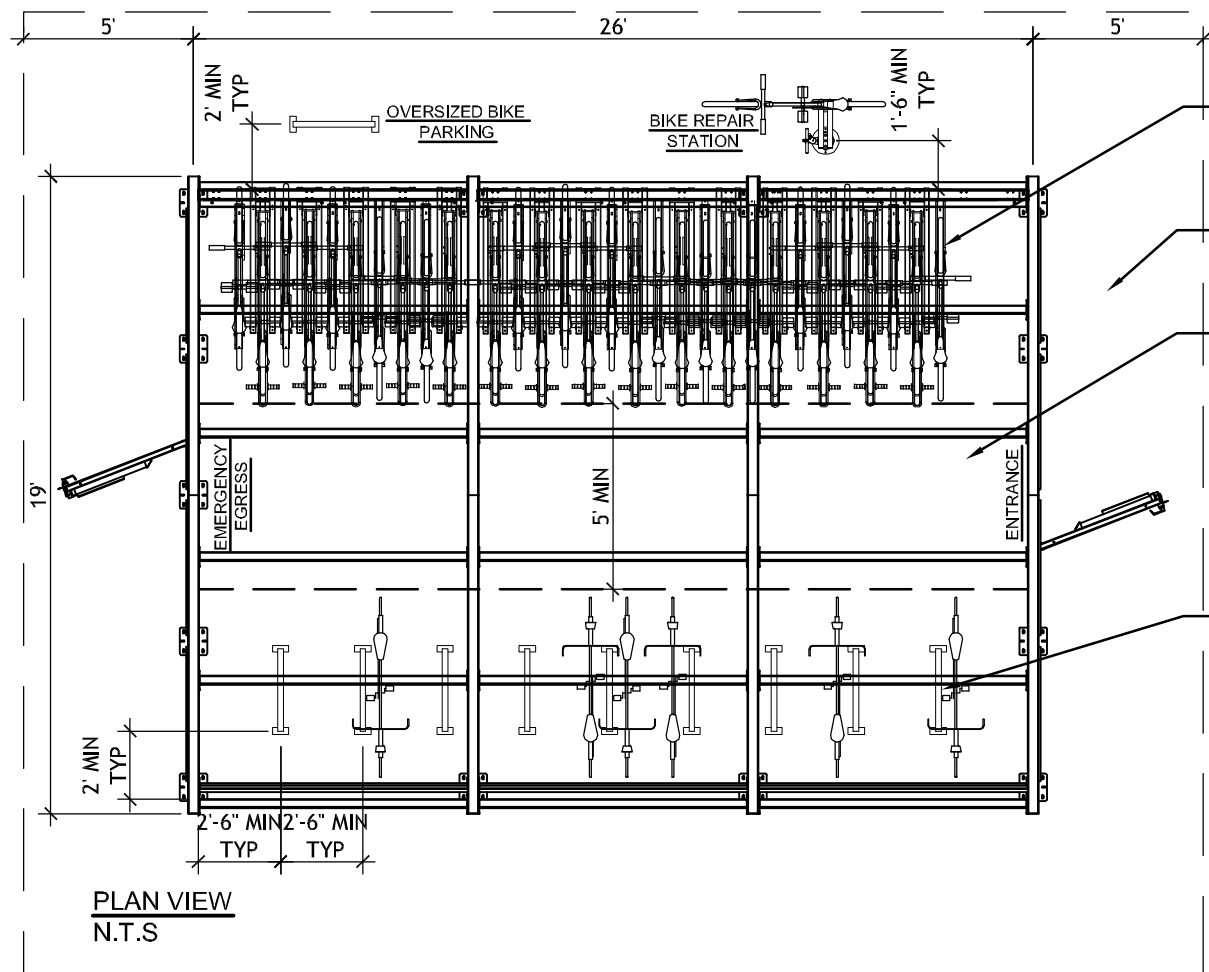
Bike Repair Station: 1 unit
Oversized Parking: 1 unit, 2 total spaces

Cost per Bike shelter: \$35,500
Cost per Inverted-U rack: \$90
Cost per Bike Repair Station: \$1,400
Cost per Oversized Parking: \$90

Total Bicycle Capacity: 38
Total Estimated Cost: \$39,000



CONCEPTUAL DESIGN/NOT FOR CONSTRUCTION



PROPOSED DOUBLE TIER STYLE RACK UNIT, TYP

PROPOSED STRUCTURAL CONCRETE PAD

PROPOSED ACCESS AISLE

PROPOSED INVERTED-U STYLE RACK UNIT, TYP

SECURE BIKE SHELTER- STANDARD CAPACITY:

- Bike shelter
- Static double-decker style racks
- Inverted-U style racks
- Oversized bike parking area
- Bike repair station

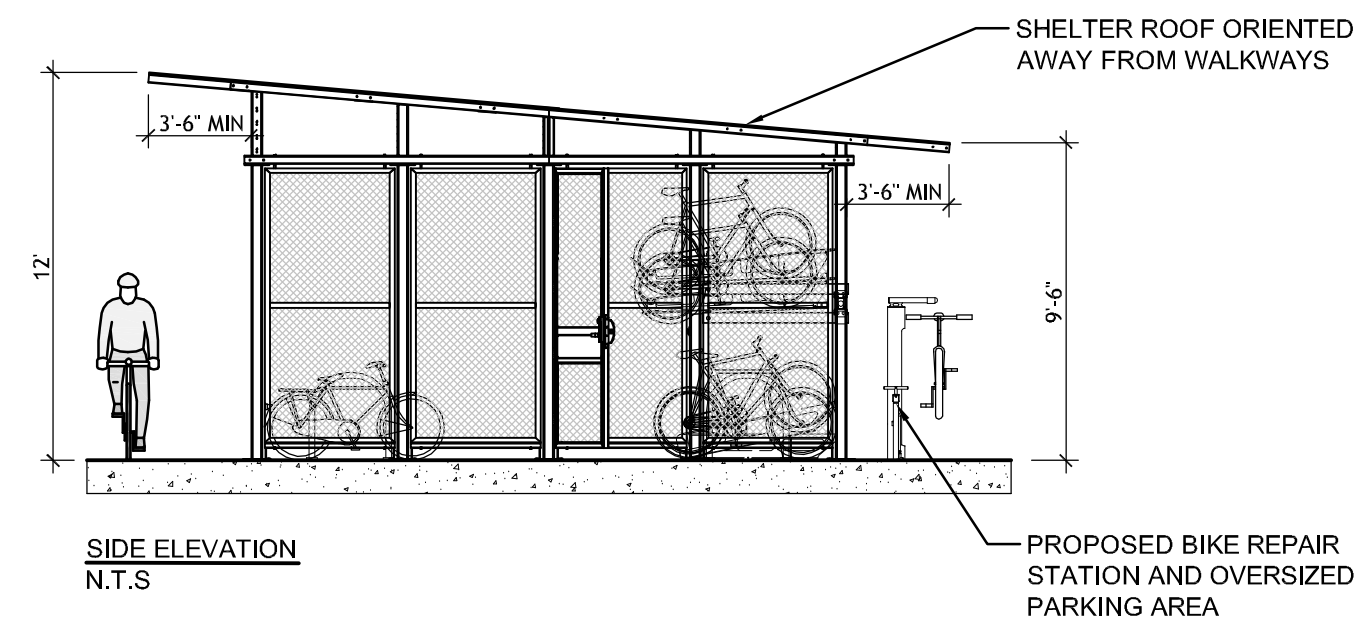
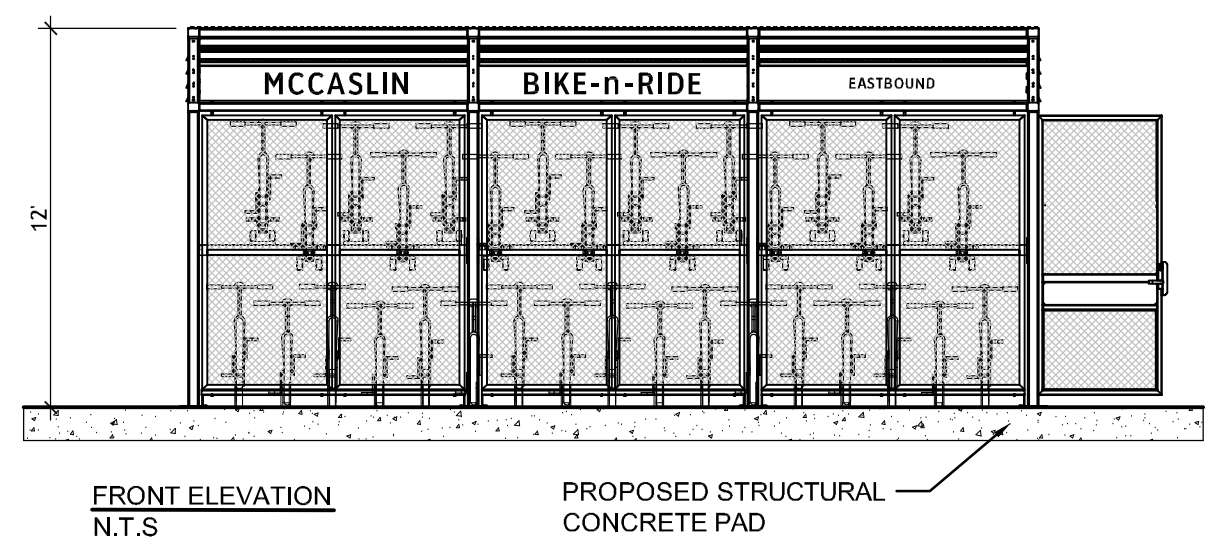
Double-decker style racks: 3 units
Bicycle Capacity: 30 spaces

Inverted-U style racks: 9 units
Bicycle Capacity: 2 spaces per rack unit, 18 total spaces

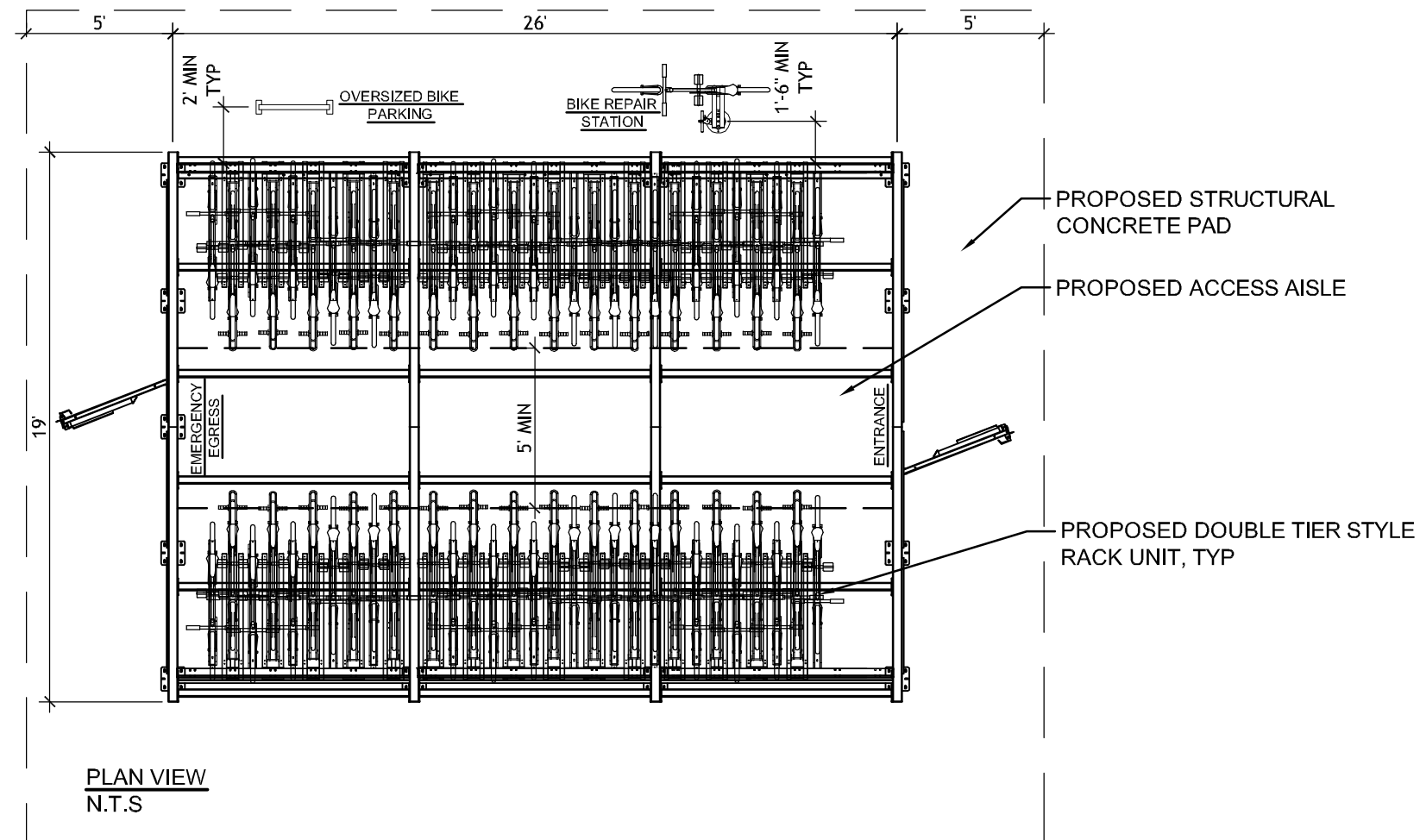
Bike Repair Station: 1 unit
Oversized Parking: 1 unit, 2 total spaces

Cost per Bike shelter: \$35,500
Cost per static double tier style rack: \$1,200
Cost per Inverted-U rack: \$90
Cost per Bike Repair Station: \$1,400
Cost per Oversized Parking: \$90

Total Bicycle Capacity: 50
Total Approximate Cost: \$42,000



CONCEPTUAL DESIGN/NOT FOR CONSTRUCTION



SECURE BIKE SHELTER- HIGH CAPACITY:

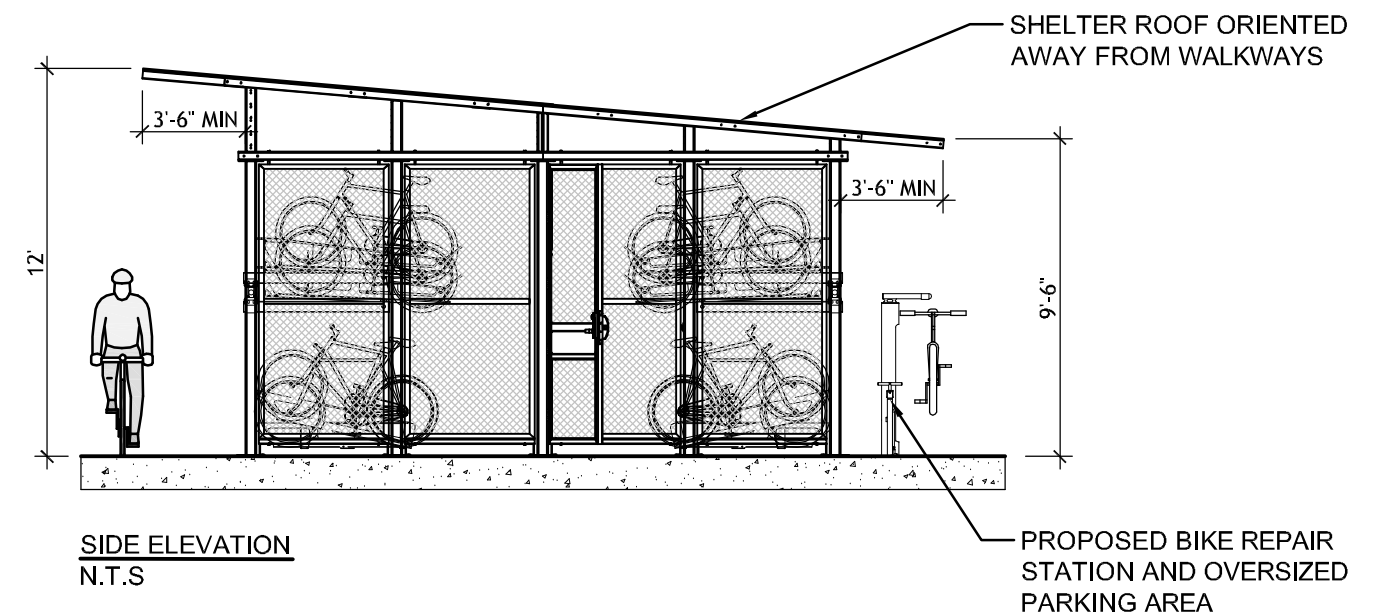
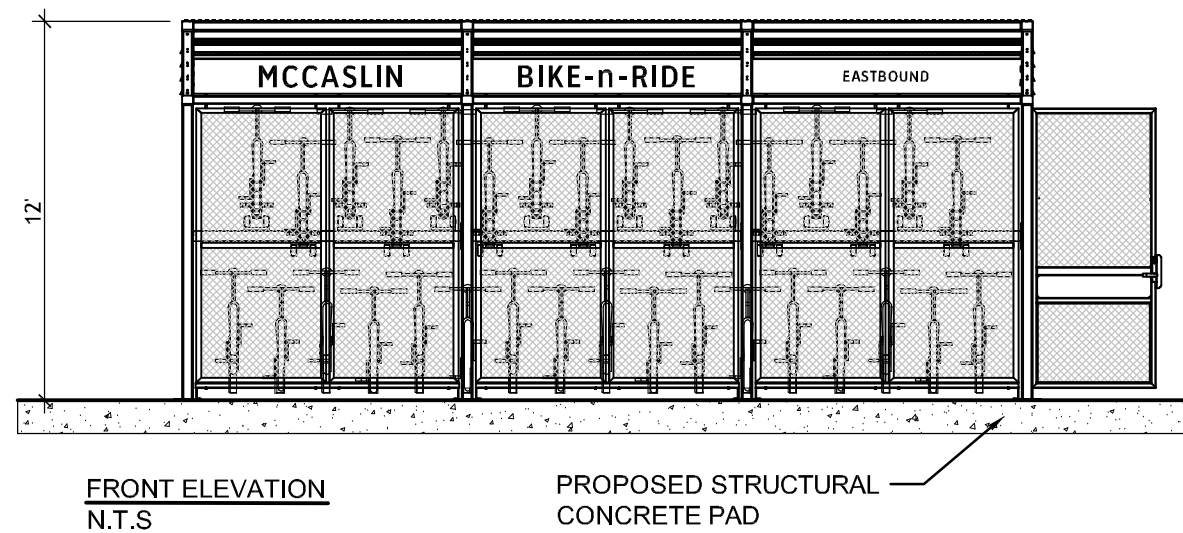
- Bike shelter
- Static double-decker style racks
- Oversized bike parking area
- Bike repair station

Double-decker style racks: 6 units
Bicycle Capacity: 60 spaces

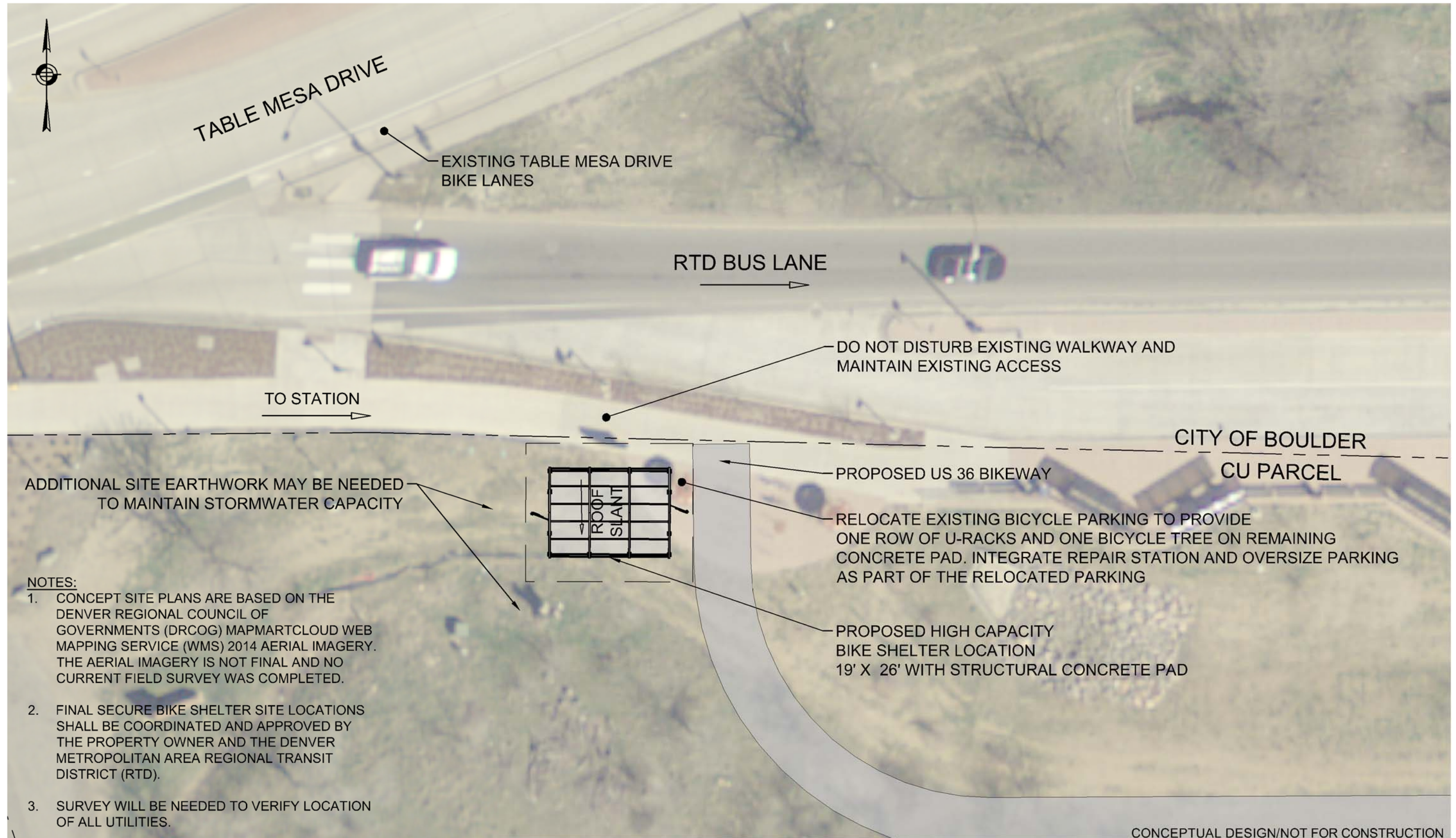
Bike Repair Station: 1 unit
Oversized Parking: 1 unit, 2 total spaces

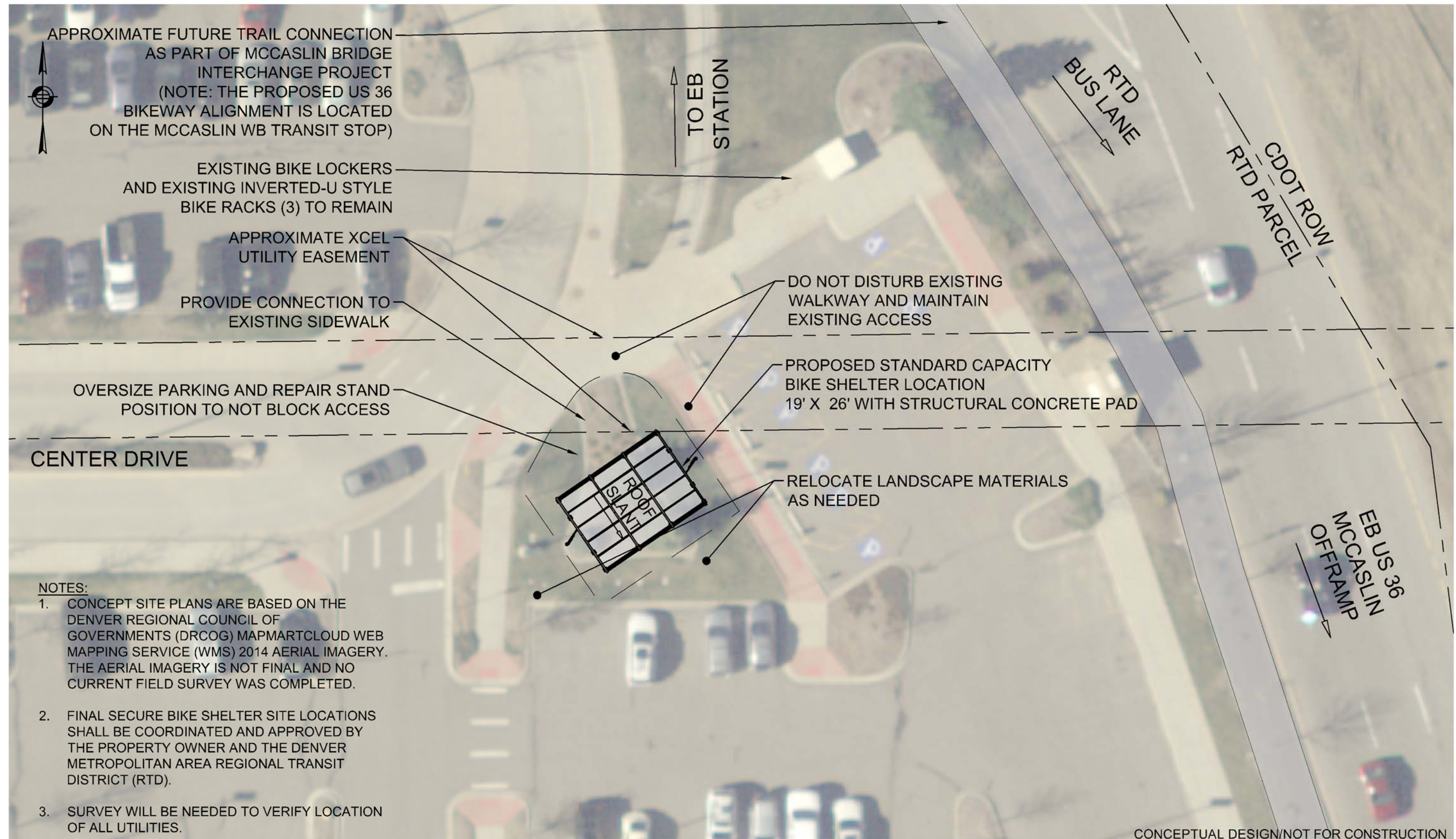
Cost per Bike shelter: \$35,500
Cost per static double tier style rack: \$1,200
Cost per Inverted-U rack: \$90
Cost per Bike Repair Station: \$1,400
Cost per Oversized Parking: \$90

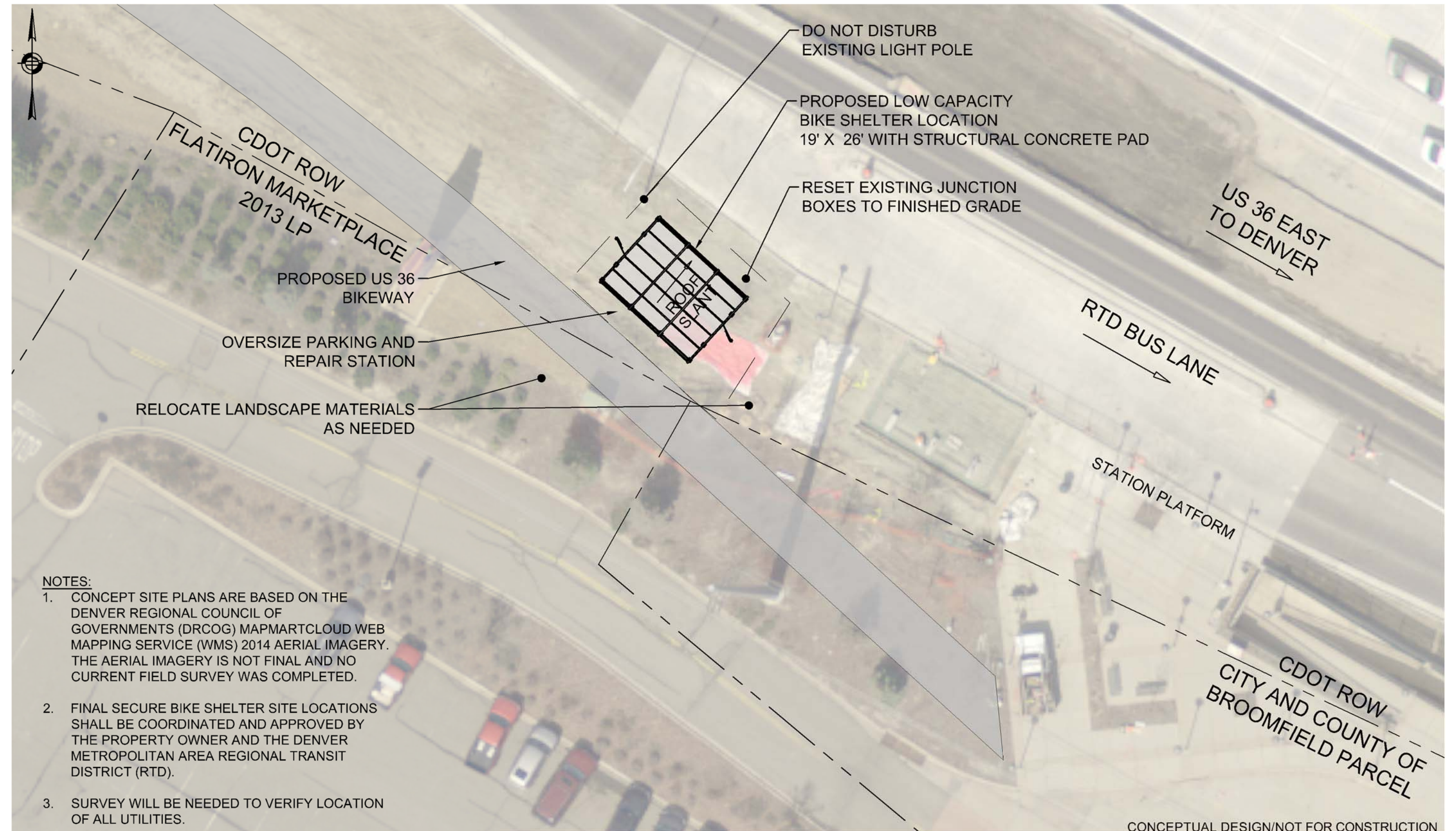
Total Bicycle Capacity: 62
Total Approximate Cost: \$46,000

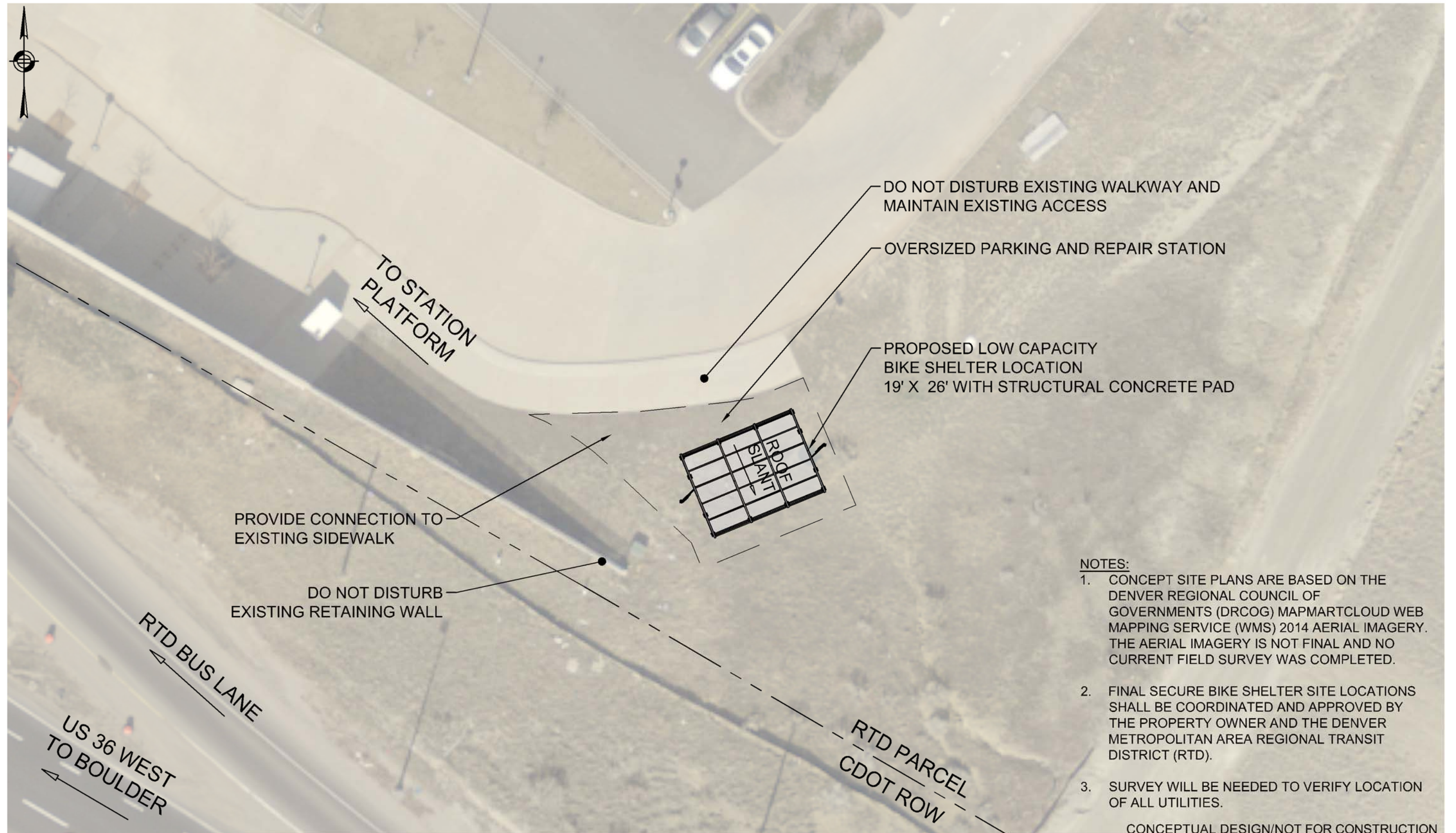


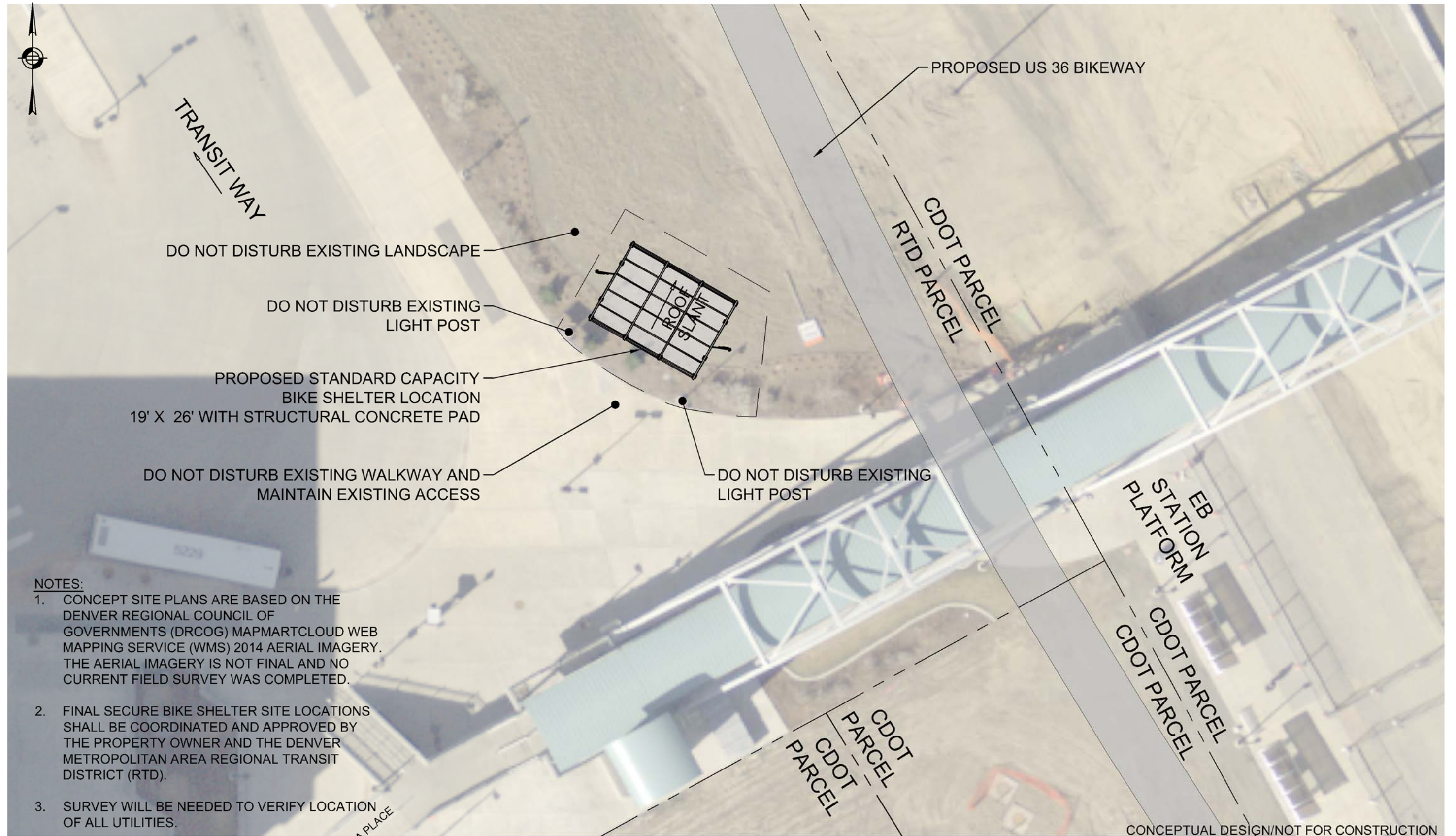
CONCEPTUAL DESIGN/NOT FOR CONSTRUCTION

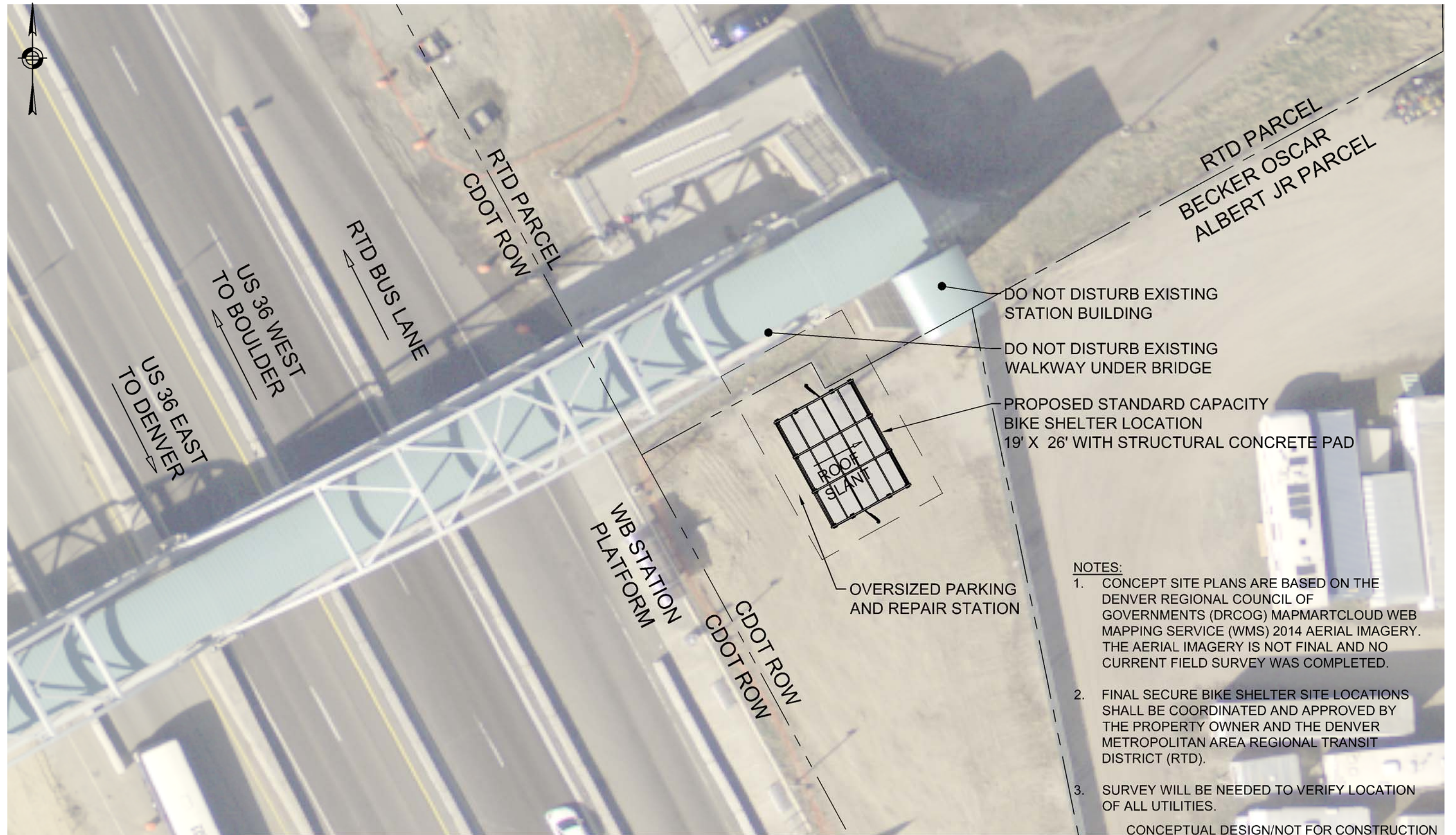


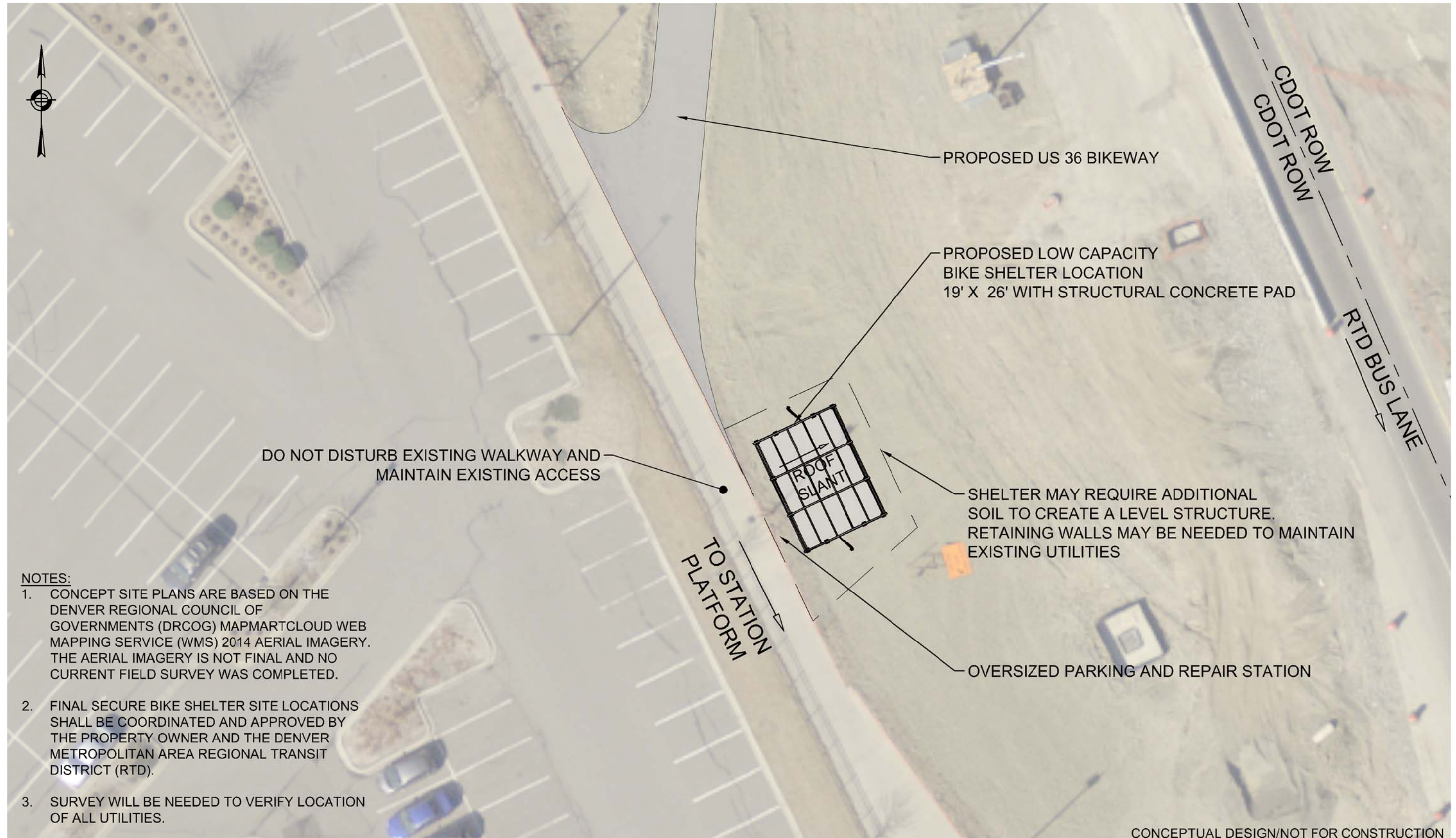












NOTES:

1. CONCEPT SITE PLANS ARE BASED ON THE DENVER REGIONAL COUNCIL OF GOVERNMENTS (DRCOG) MAPMARTCLOUD WEB MAPPING SERVICE (WMS) 2014 AERIAL IMAGERY. THE AERIAL IMAGERY IS NOT FINAL AND NO CURRENT FIELD SURVEY WAS COMPLETED.
2. FINAL SECURE BIKE SHELTER SITE LOCATIONS SHALL BE COORDINATED AND APPROVED BY THE PROPERTY OWNER AND THE DENVER METROPOLITAN AREA REGIONAL TRANSIT DISTRICT (RTD).
3. SURVEY WILL BE NEEDED TO VERIFY LOCATION OF ALL UTILITIES.

